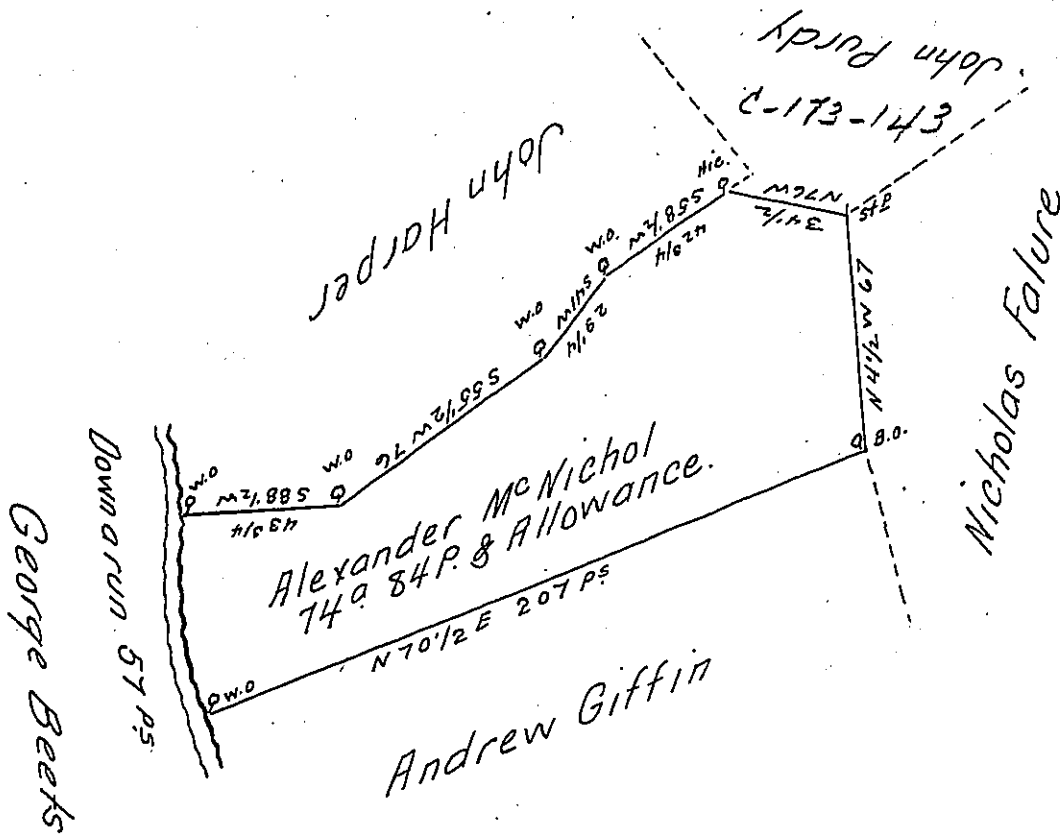


Courses on the run
 S. 9° E. 23^{PS}
 S. 21. W. 8^{3/4}
 S. 9. E 11
 S. 13 E 14^{1/4}
 57^{PS}



A Draft of a Tract of Land situate in Newton Township in the County of Cumberland Containing seventy four Acres and 84 Perches and an Allowance proportional to six p Cent for Roads &c^a Surveyed the 25th Day of June 1794 in pursuance of a Warrant granted to Alexander McNichol bearing Date the 3^d Day of April 1787.

To Daniel Brodhead Esquire }
 Surveyor General of Pennsylvania } Math^w Henderson D.S.

IN TESTIMONY that the above is a copy of the original remaining on file in the Department of Internal Affairs of Pennsylvania, made conformably to an Act of Assembly approved the 16th day of February, 1833, I have hereunto set my Hand and caused the Seal of said Department to be affixed at Harrisburg, this sixth day of December 1905,

James D. Proctor
 Secretary of Internal Affairs.